

Dr. Craig A. Fenimore
OPTOMETRIST

Committed to excellence in eye care

Eye Imaging Technology

what is Optomap?

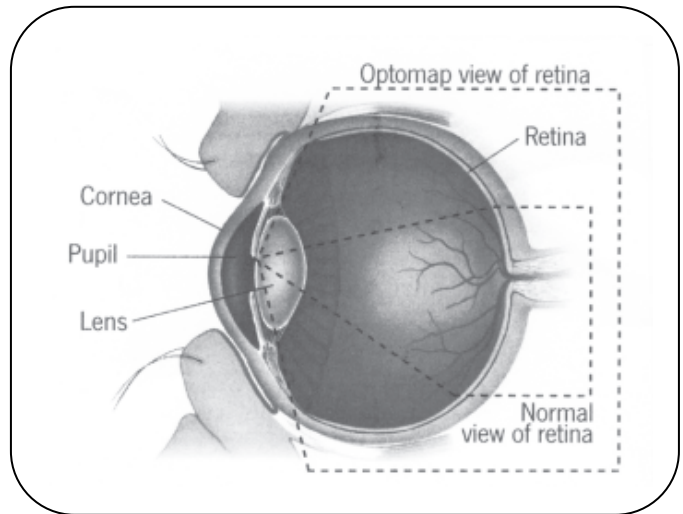
Optomap is a new technology that represents the latest in eye disease detection. It allows us to more thoroughly evaluate your retina, the sensitive tissue in your eye that is responsible for vision. The retina is susceptible to a variety of diseases, which can lead to vision loss. Early detection of retinal abnormalities is crucial to protect your vision. The image is kept as a part of your record and we can compare the pictures year after year at your annual exam.

why do I need this test?

The Optomap gives us a more comprehensive way of viewing your eye than was previously available and it allows to perform a more thorough exam. It adds to our ability to evaluate the health of your eye. The picture demonstrates the difference between the previous and new ways of imaging the eye.

what things do you see?

The eye is the only place in your body where you can see blood vessels while they are working! Optomap enables the doctors to not only detect eye diseases like macular degeneration, but also to look for signs of systemic diseases like diabetes and hypertension. Eye exams help you safeguard both your eyesight and general health.



how does Optomap work?

Optomap is easy, comfortable and takes only a few minutes. You simply look into the instrument and push a button. An image is captured and the results can be viewed immediately. We recommend this test for patients of all ages as part of your routine exam. **HEY! NO EYE DROPS FOR DILATION.....**you are able to go to work, school, shopping or whatever.....no restriction as it would be with the dilation drops.

is it covered by insurance?

While insurance plans provide basic vision exam coverage, they do not currently include this advanced diagnostic testing. The fee for this service is \$35.00. Now, if Dr. Fenimore found a **medical diagnosis** during your examination that is accepted by your **medical coverage plan**, then we would be able to process this claim on your behalf. Further information will be explained at your scheduled appointment.

- Yes, I choose to have the Optomap performed at this time.
- No, I choose to defer this test at this time.
- I prefer to discuss this with the doctor prior to the test.

Patient Signature _____ **Date** _____